

FOR SALE: 15,552 +/-SF

3.35 acres

Unadilla, GA

The Bateman Group LLC.

Commercial Real Estate

Oliver C. Bateman III, Broker



- **Location:** 3.35 +/- acres and a 15,552 +/- SF building (former Clothing Carnival) at the Unadilla Exit.
- Property has great visibility from I-75
- Great possible redevelopment opportunity

	1 mile	3 miles	5 miles
Population	1,341	3,384	4,367
Median Household Income	\$28,324	\$31,227	\$36,427

\$785,000

Oliver C. Bateman, III
 Office: 478-745-0008
 Fax: 478-745-0009
 Cell: 478-972-6043
 oliver@thebatemangroup.com
 2885 Walden Road
 Macon, GA 31216



The Bateman Group LLC.

Commercial Real Estate

Oliver C. Bateman III, Broker

www.thebatemangroup.com

The above information is deemed reliable, but not guaranteed. It has been obtained from sources believed to be reliable; however, you are advised to verify this information through personal or professional inspections.

FOR SALE: 15,552 +/-SF
3.35 acres
Unadilla, GA

The Bateman Group LLC.
Commercial Real Estate
Oliver C. Bateman III, Broker

Building Photo



Oliver C. Bateman, III
Office: 478-745-0008
Fax: 478-745-0009
Cell: 478-972-6043
oliver@thebatemangroup.com
2885 Walden Road
Macon, GA 31216



The Bateman Group LLC.
Commercial Real Estate
Oliver C. Bateman III, Broker

www.thebatemangroup.com

The above information is deemed reliable, but not guaranteed. It has been obtained from sources believed to be reliable; however, you are advised to verify this information through personal or professional inspections.

FOR SALE: 15,552 +/-SF

3.35 acres

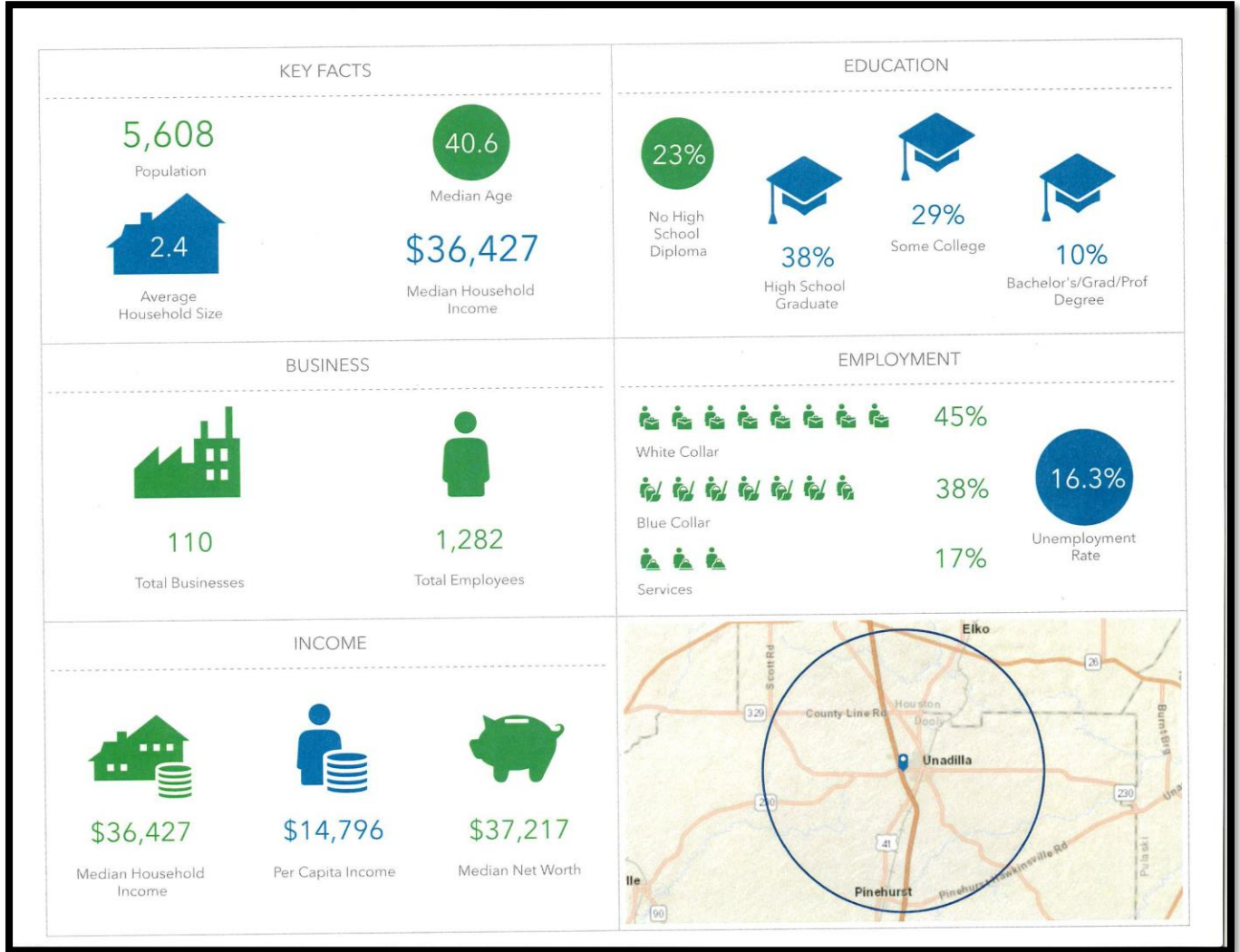
Unadilla, GA

The Bateman Group LLC.

Commercial Real Estate

Oliver C. Bateman III, Broker

Key Facts 5 mile radius



Oliver C. Bateman, III
 Office: 478-745-0008
 Fax: 478-745-0009
 Cell: 478-972-6043
 oliver@thebatemangroup.com
 2885 Walden Road
 Macon, GA 31216



www.thebatemangroup.com

The Bateman Group LLC.

Commercial Real Estate

Oliver C. Bateman III, Broker

The above information is deemed reliable, but not guaranteed. It has been obtained from sources believed to be reliable; however, you are advised to verify this information through personal or professional inspections.